

Twelve Bar Blues:

I I I I IV IV I I V IV I I

Standardized Stage Band Articulations COMPILED BY MATT BETTON



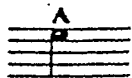
Heavy Accent
Hold full value.



The Flip Sound note, raise pitch, drop into following note (done with lip on brass).



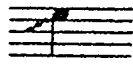
Long Gliss Down Same as long gliss up in reverse.



Heavy Accent
Hold less than full value.



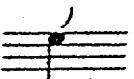
The Smear Slide into note from below and reach correct pitch just before next note. Do not rob preceding note.



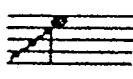
Short Lift Enter note via chromatic or diatonic scale beginning about a third below.



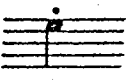
Heavy Accent
Short as possible.



The Doit Sound note then gliss upwards from one to five steps.



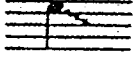
Long Lift
Same as above except longer entrance.



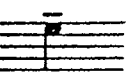
Staccato
Short—not heavy.



Du
False or muffled tone



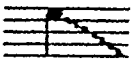
Short Spill Rapid diatonic or chromatic drop. The reverse of the short lift.



Legato Tongue
Hold full value.



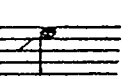
Wak
Full tone—not muffled.



Long Spill Same as above except longer exit.



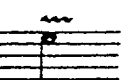
The Shake
A variation of the tone upwards—much like a trill.



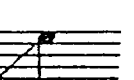
Short Gliss Up Slide into note from below (usually one to three steps).



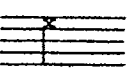
The Plop A rapid slide down harmonic or diatonic scale before sounding note.



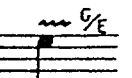
Lip Trill Similar to shake but slower and with more lip control.



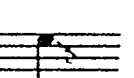
Long Gliss Up
Same as above except longer entrance.



Indefinite Sound
Deadened tone—indefinite pitch.



Wide Lip Trill Same as above except slower and with wider interval.



Short Gliss Down The reverse on the short gliss up.

Note: No individual notes are heard when executing a gliss.

THE TWELVE BLUES SCALES—TREBLE & BASS CLEF

TREBLE CLEF

BASS CLEF

The image shows the twelve blues scales for both treble and bass clefs. Each scale is represented by a staff with notes and accidentals. The scales are: C, Eb, F, G, Ab, A, Bb, B, C, D, Eb, E, F, G, Ab, A, Bb, B. The notes are written in a shorthand notation (e.g., C, Eb, F, G, Ab, A, Bb, B) and are accompanied by a rhythmic pattern of eighth notes.